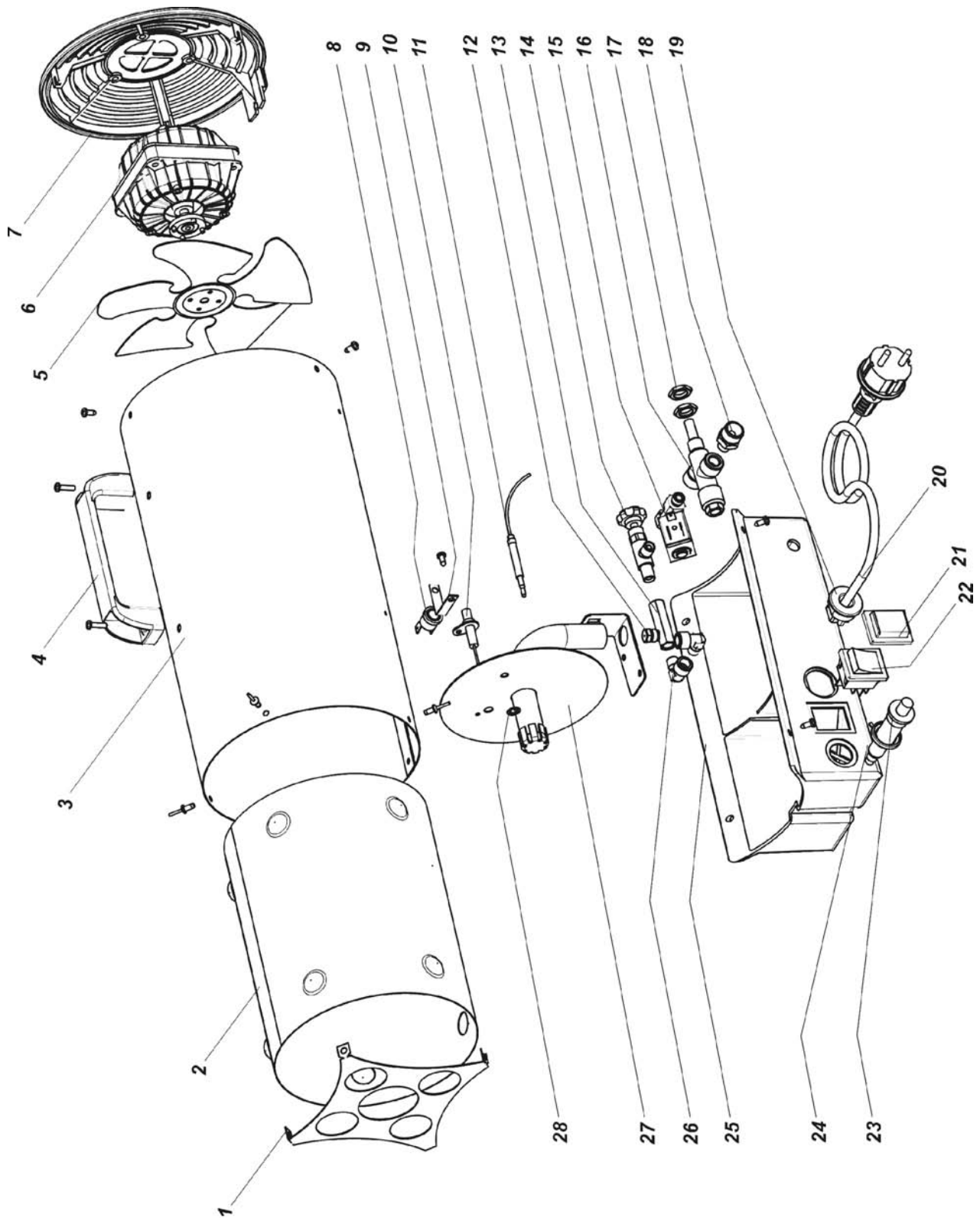


BLP 15 kW M / BLP 15 kW R / BLP 15 kW

UNIT 1

ILLUSTRATED PARTS BREAKDOWN

Edizione 2010
Rev. A



Pos.	Code NR	Description
1	4160.714	OUTLET GRID
2	4161.372	COMBUSTION CHAMBER
3	S/R	COVER
4	4160.715	PLASTIC HANDLE
5	4162.251	FAN ø172 19°
6	4162.243	ELECTRIC MOTOR
7	4160.713	PLASTIC GRID
8	4160.636	SAFETY THERMOSTAT
9	4160.708	SUPPORT FOR THERMOSTAT
10	4160.707	IGNITION ELETTRICAL FOLDER
11	4160.654	INTERRUPTED THERMOCOUPLE
12	4160.746	GAS NOZZLE
13	4160.742	EXTENSION
14	4160.675	GAS COCK
15	4160.655	ELECTRO VALVE
16	4161.137	SAFETY GAS VALVE
17	4160.701	RING NUT M12X0,75
18	4160.700	GAS INLET NOZZLE
19	4160.635	KEEPER WIRE DEVICE
20	4160.733	POWER CORD
21	4160.638	COVER SWITCH
22	4160.637	SWITCH
23	4162.222	PIEZO IGNITOR WITH ADAPTER
24	N/A	ADAPTER FOR PIEZO IGNITOR
25	4160.760	PLASTIC BASE
26	4160.620	90° DEGREE ELBOW 1/8"
27	4160.702	GAS BURNER
28	4160.627	ELASTIC WASHER

N/A = Parts not available

S/R = Parts available on special request only